

# ArcEQuls

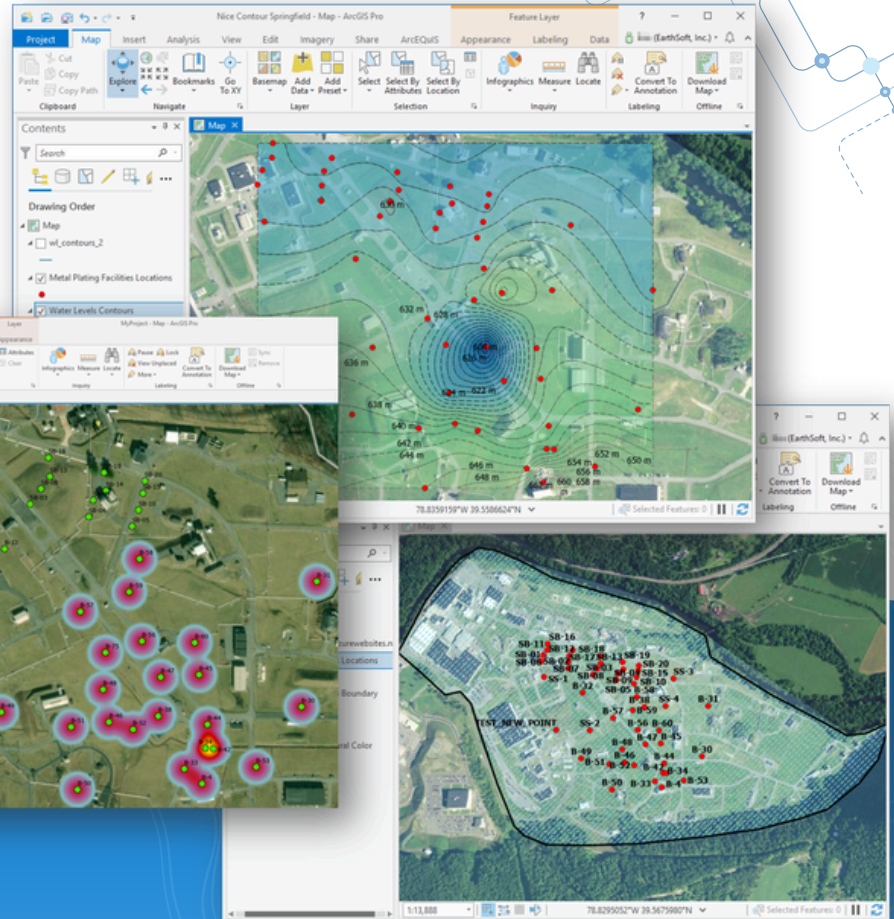
Unleash the Power of EQuls Data

# REST API



## Overview

ArcEQuls is an add-in for Esri ArcGIS Pro Desktop to directly connect to EQuls Enterprise and easily access EQuls data. Map and analyze EQuls environmental and geotechnical data in real time with the power of ArcGIS Pro tools. Available via the REST API License.



## User Authentication

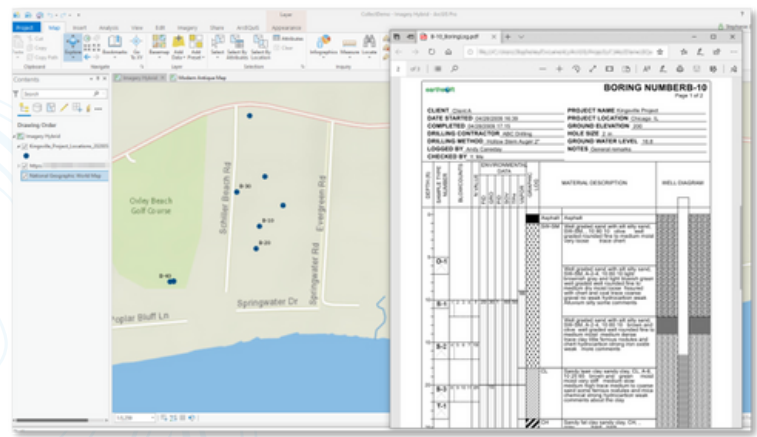
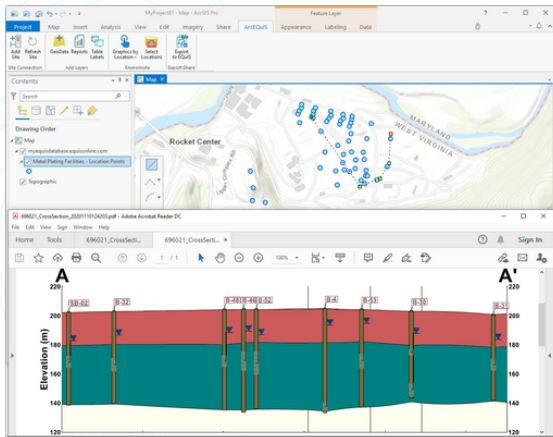
Users assigned the REST API role can access an EQuls Enterprise site in ArcGIS Pro Desktop via their EQuls username and password, an API token, sign in with Microsoft credentials, or Single Sign On (SSO) authentication provided that the Esri-authenticated user is also an EQuls user.

API tokens are generated in the User Profile Editor in EQuls Enterprise.

# ArcEQuls

## Features

- ✓ Add map layers as direct EQuls database links or snapshots from EQuls (i.e., a set of data at a given point in time). Supported layers include:
  - EQuls Facilities (must have user permissions).
  - Locations and Location Groups for EQuls Facilities. Locations can be either points or polygons.
  - Mappable EQuls Reports associated with the selected facilities.
- ✓ Click locations on a map layer to dynamically generate EQuls EnviroInsite (EI) graphics, such as boring logs, cross-sections, Piper diagrams, and Stiff diagrams. Graphics are automatically downloaded as PDF files.
- ✓ Create features like polygons, points, and polylines in ArcGIS Pro and save to the EQuls database as a GeoJSON file.
- ✓ Run EQuls reports directly in ArcGIS Pro and automatically add them to the map.



- ✓ Display tables of analytical data from an EQuls database on map layers in ArcGIS Pro. The data tables can be generated using either EQuls Table Label Reports.

